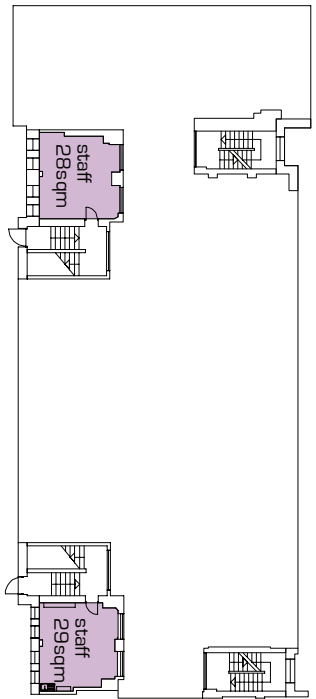


ground floor plan

net area 593sqm



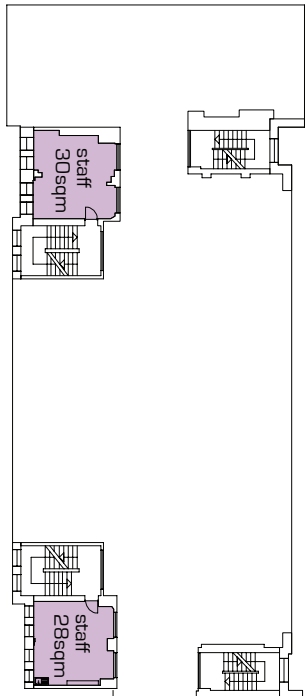
ground floor plan | mezzanine plan

net area 56sqm



first floor plan

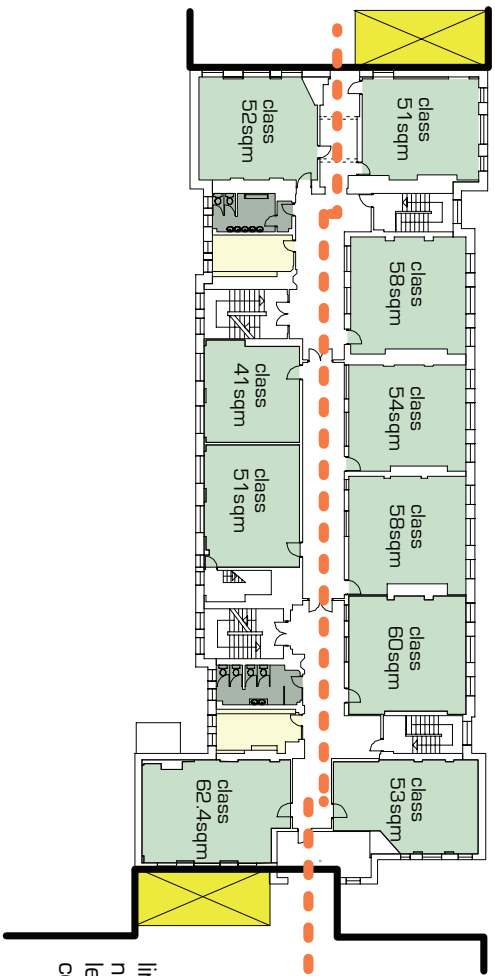
net area 601 sqm



first floor plan | mezzanine plan

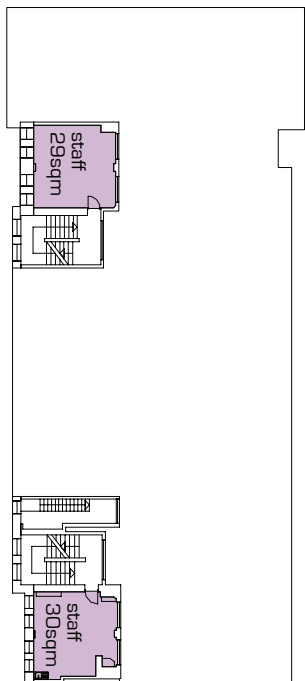
net area 58sqm

link to new build admin and reception



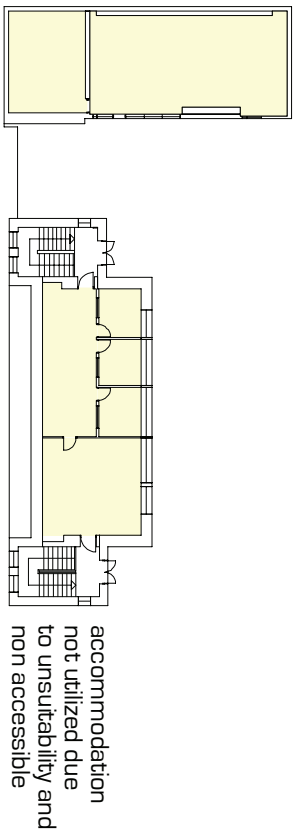
second floor plan

592sqm



second floor | mezzanine plan

net area 59sqm



accommodation not utilized due to unsuitability and non accessible

SAMPLE