



Insite

Partnerships for Schools
Quarterly
Winter 2008-2009



partnerships for schools

building schools for the future



Welcome to 2009's first edition of *Insite*. With the new term now in full swing, it seems an opportune moment to reflect on the past year and how the BSF landscape developed over 2008.

With 22 new schools opening their doors in September, the festive period greeted us with 42 BSF schools open in total. January saw a further 8 schools open – so we have already exceeded our target of 47 schools by the end of the financial year.

Well over half of the councils in England are now engaged in BSF, and following the public consultation on how best to manage the second half of the programme, all local authorities submitted their Expressions of Interest on time by the end of November. The PFS team is now working through these submissions with a view to determining the order in which those local authorities will now enter the programme, with an announcement on this due in spring 2009.

Autumn 2008 also saw us implement the recommendations from the Procurement Review. Introduced for local authorities in Wave 5, we anticipate these changes will streamline the procurement phase of BSF by up to two months and reduce bid costs across the programme by an anticipated £250m. Following on from this, we also commissioned PricewaterhouseCoopers to carry out a review of operational Local Education Partnerships (LEPs) to identify what is working well and what lessons can be passed on to those who have not yet reached the point of forming a LEP. This work will report back later this quarter.

PfS hosted its inaugural *Excellence in BSF Awards* in November, where we were put through our paces by comedian Rob Brydon. Over 750 people attended the Awards, to celebrate some really excellent examples of BSF across the spectrum – it was truly a night to remember. More details about the winners can be found on pages 9-11.

But in addition to all of this activity, the most important development of 2008 was the steady stream of evidence illustrating the difference that BSF is making on the ground: to students, to teachers, to parents and to communities. GCSE results for the first set of BSF schools to have been open for a year or more show an average increase of around 10 percentage points in results for A* - C, including English and Maths. Attitudinal research carried out by the NFER indicated significant increases in young people's sense of pride and enjoyment of school, together with dramatic reductions in anti-social behaviours, such as bullying and graffiti. Parents too report very positive feedback on the new learning environments that their children are attending, with independent research in Leeds indicating a strong recognition of the positive impact of BSF on learning. Although early days, these are all encouraging signs and, in the coming year, we will continue to gather evidence to illustrate the contribution that BSF makes to educational transformation.

2008 was without doubt a phenomenally busy year and the coming 12 months promise to deliver more of the same. The PFS team has enjoyed working with many of you over the past year and look forward to a continued constructive and positive engagement in 2009.

As ever, we welcome your comments on this edition of *Insite*. As previously, we have opted not to print this publication as part of our commitment to reduce our paper usage, so please don't print it unless you really need to.

A handwritten signature in black ink, appearing to read 'Tim Byles'. The signature is fluid and cursive, with a prominent 'T' and 'B'.

Tim Byles CBE
Chief Executive



Project update & news

Six local authorities completed eight new schools in time for the new school term in January, bringing the BSF total to 50 - ahead of target.

Lewisham, Manchester, Knowsley, Sheffield, Leicester and Bristol all opened schools - more details can be found in the Schools Directory (www.partnershipsforschools.org.uk/programme/school_search.jsp) on the PFS website, which lists all the new and refurbished BSF and Academy schools.

The first phase of the largest BSF scheme to date – part of Kent's £1.8 billion project – reached Financial Close in October. Kent County Council signed contracts with private sector partners Land Securities Trillium and Northgate Education.

Hackney's Wave 2 project also reached Financial Close with mouchelbabcock education in November. Financial Closes for three other BSF projects: Newham, Tower Hamlets and Tameside (a £50m PFI deal), bring the total number of closed projects to 29 at time of going to press.

In his keynote speech at the PFS Annual Conference on 18 September, the Minister of State for Schools and Learners, Jim Knight MP, announced that Expressions of Interest were being invited from all local authorities yet to join BSF.

The Minister aims to announce a new national programme for Waves 7 – 15 in the spring. PFS will then invite those local authorities with the highest prioritised projects to provide evidence that they are ready to deliver.

For more information about the progress of BSF projects, go to the PFS website: www.partnershipsforschools.org.uk/programme/progress.jsp

Academies

Nine Academy projects are now on site, with a further 18 Academies in procurement.

We also have two BSF projects and four One School Pathfinders on site, having procured their contractors using the National Academies Framework.

We are engaged on 53 Academies through LEPs and 67 through the Framework.

We are now in the process of beginning to procure a further framework with an OJEU value of £4 billion, which is intended to be operational by December 2009. We have appointed Davis Langdon and Everest as technical advisers, Dickinson Dees as legal advisers and Grant Thornton as financial advisers. The first significant milestone within the procurement of the new framework is 1 March 2009, when the OJEU will be advertised.

For more information about the progress of Academy projects through BSF and the National Framework, go to the PFS website: www.partnershipsforschools.org.uk/programme/academies_progress.jsp

News in brief

This section of *Insite* provides a round-up of the interesting snippets of news and information we pick up through our contacts with local authorities, private sector contractors and our government partners.

If you have a 'snippet' that you think *Insite* readers would be interested in, please send it to insite@p4s.org.uk.

The Cabinet swapped Westminster for Leeds on 28 November to meet local residents and take part in a series of visits across the area. The Prime Minister, Gordon Brown, and Secretary of State Ed Balls, accompanied by PFS CEO, Tim Byles, officially opened Allerton High School in Leeds, which has been rebuilt as part of the city's BSF project.

The Prime Minister said: "This school is conceived as a 21st century school, one that will lift the ambitions and aspirations of young people in this area...I believe it will be a model for other schools around the country in years to come."

Allerton High features in one of our 'BSF Voices' films, capturing the reactions and aspirations of students and staff in this school which opened in September. The video can be watched on the PFS website at www.partnershipsforschools.org.uk/library/bsf_voices_allerton_high.jsp

A Liverpool school has been encouraging students to use mobile phone-style handsets instead of computer keyboards as part of a pioneering pilot scheme to test a range of technology which could be considered for use in BSF schools.

Gateacre Community Comprehensive School caught the attention of the media, including CBBC's *Newsround*, when it took delivery of 10 cre8txt devices for students to trial in study time and tutor groups.

IT network manager Greg Jones was quoted in the *Liverpool Echo* stressing these devices were just one example of a range of technology being trialled by staff and students. He added: "The school prides itself on being cutting edge and it's important to look at new things as it may be that we all move away from conventional keyboards and this sort of device is here to stay. At this stage, it is curiosity. We are merely looking at the technology out there as part of Building Schools for the Future."

You can watch *Newsround's* report at: http://news.bbc.co.uk/cbbcnews/hi/newsid_774000/newsid_7740400/7740431.stm

The first pupil referral unit in England to be built as part of the BSF programme is now open. Park Campus in the London Borough of Lambeth is a specialist alternative provision unit supporting the area's mainstream schools by providing education for up to 80 11 to 18-year-olds who have a wide range of social, emotional and behavioural difficulties.

In the past six months alone four young people have been helped back into mainstream schools and the new school aims to support even more young people make this transition. The new purpose-built site is set to help even further - for example, there are no remote areas outside the school where pupils can loiter unobserved because the need for supervision has been taken into account into the design.



The picture above and on the front cover shows Park Campus pupils Tricia Carr, left, and Comfort Orotayo.

The new site includes a science lab, food technology classrooms and a multi-media suite, meaning a broad curriculum can be offered for the first time alongside specialist support. The school also has sports facilities available for community use outside of school hours including an Astroturf pitch, mini-gym and a multi-use area that can be used for sports, meetings and as a performance hall.

Park Campus' head teacher Richard Leonard said: "Historically, alternative education provision within the borough has been housed in older, not fit for purpose buildings and finally to move into a specially designed new building has turned the vision of all our stakeholders into reality."

More than 2,000 pupils and staff have started lessons in one of the largest secondary schools to open as part of the BSF programme. Kenton School in Newcastle covers around 19,000 square metres – an area the size of four football pitches.

The school has Lottery-funded sports facilities that will be available to the local community, including six international-standard badminton courts, an all-weather sports pitch, a gym, fitness suite and dance studio, and a sports cafe.

Headteacher David Pearmain said: "We loved the old buildings because they were our home, but our new building will allow us to offer education which will be breathtakingly modern in our aspirations for our students, but also reassuringly traditional in our encouragement of civilised personal values.

"Kenton will continue to transform young people's lives and the new Kenton will speed up that transformation and shine as a beacon of hope for our students' future and the future of our community."

Kirsty Thirlwell, chief executive of the city's LEP, Aura, added: "This is the sixth and largest new school we have delivered for Newcastle and it is a great example of the benefit properly directed investment can bring to education.

"Our aim is to transform education in the city and create a better and brighter future for thousands of children across the region. Phase one of this investment will have delivered seven new schools by February next year and will be closely followed by a second phase with a further eight schools open by 2012."

A report by the British Educational Suppliers Association (BESA) has found that "schools need to upgrade their furniture because today's children have outgrown the tables and chairs designed to meet the needs of 1960s pupils." BESA director general, Dominic Savage, said: "Although our starting point was not a question of obesity, the average child today is very different to a child in the 1960s, which is the last time children were actually measured for determining measures of furniture".

Tim Byles addressed the issue of tables and chairs as part of his keynote speech at the PFS design conference (see page 8 for more details). He said: "The choice of furniture and equipment as part of design discussions is something which we should not overlook for its transformational impact for education. It is for this reason that PFS has deliberately separated Furniture and Equipment (F&E) from buildings and grounds in the new draft Output Specification template, to emphasise the importance F&E can play in providing an agile environment suitable for personalised learning."

News in brief, cont'd...

Grand Designs TV presenter Kevin McCloud joined students, staff and governors of Brislington Enterprise College to celebrate the official opening of Bristol's latest BSF school in November. Two Year 11 students, Alice Lamb, aged 15, and Lily Bland, 16, took Kevin on a tour of the college (pictured below and on the front cover) and showed him the 'learning communities' – a series of seven mini-schools that make up the college, including one for post-16 students, one for physically-impaired students, plus a centre for autistic students.



At the opening ceremony, Kevin told guests and students that the new college “knocks me back”, adding: “It’s a great building that works really well and is facilitating the learning and lives of those who use it.”

He told the students: “You don’t need a glossy marble ceiling or big shiny glass walls everywhere to exemplify greatness in architecture. Great buildings are great because they really work.”

He added: “This new building may have a client in the shape of the local authority, but there’s only one client who matters and that’s you – this is your school, it belongs to you and I know you’re going to use it to the absolute maximum.”

Brislington Enterprise College is the first ‘schools within a school’ design to open under the BSF programme, based on the principle of human-scale education as applied particularly in schools in Boston, USA. In place of one large school is a series of ‘mini-schools’ – each with its own director and staff – in which students spend about 60 per cent of their time, with the remainder in shared areas for specialist subjects such as dance, PE and art.

The head of a Lancashire secondary and a county councillor have helped to set up a charity to send unwanted school furniture to schools in Africa and Asia after witnessing first-hand the lack of tables and chairs during a school visit to Pakistan.

Mike Tull, of Marsden Heights Community College in Nelson and Councillor Terry Burns have launched the new charity, Furniture for Education Worldwide (FEW), at a special reception in Westminster attended by Secretary of State Ed Balls and communities secretary Hazel Blears.

Over the next three years, 14 east Lancashire schools will be moving into new buildings as part of Lancashire’s BSF programme, but instead of sending the schools’ old furniture to landfill sites, the charity will ship it to Pakistan, Ghana, Kenya and Tanzania. So far FEW has raised £27,000 to transport school tables, chairs, cupboards and computers abroad. It has already sent nine 40-foot containers to the Gujrat region of Pakistan.

Cllr Burns explained: “In schools we saw in Gujrat, the children were keen and the teachers dedicated – but a lack of equipment held them back. Youngsters sat on the floor, leaning on their bags to write.

“So we had an idea to send the furniture destined for landfill to Pakistan instead. It’s recycling on a global scale. Local community groups will have first refusal, but if they don’t want the used equipment it will be shipped to Gujrat by container.”

Meanwhile, Mr Tull said the students at Marsden Heights, many of whom have family in the Gujrat region, are very “pleased and proud” that the school is involved in the project. He also hopes that in the future the school might be able to train and share best teaching practice with their counterparts in Pakistan.



Partnerships for Schools has appointed its first specialist Cultural Adviser – Elizabeth Crump – to work as part of the Education and Planning Team to raise the importance of cultural learning within the BSF programme and ensure that innovative partnerships and

approaches can be integrated into plans for transformational learning. Part-funded by Arts Council England, the Museums, Libraries and Archives Council and the Specialist Schools and Academies Trust, Lizzie will work closely alongside PFS PE & Sports Advisers as well as with other organisations working in this area.

Lizzie said: “Culture involves the creation and exploration of identity, the development of relationships and the expression of ideas. Through engaging with cultural organisations such as museums, libraries and arts organisations, and through cultural learning, young people can transform their understanding of the world, develop their skills and knowledge, and participate in and lead on the creation of positive learning experiences.

“In this new role I will be working with colleagues at PFS to embed culture and cultural learning in the BSF process. I will be identifying best practice around the country, and creating specialist resources for local authorities, schools and partners to use when planning and implementing their BSF schemes.”

Lizzie can be contacted on:
elizabeth.crump@p4s.org.uk

Headteachers in Blackburn with Darwen have formed a decision-making body to oversee developments in the borough’s schools and colleges. The Education Improvement Partnership will aim to share the workload between schools and colleges, so that there is no duplication in the setting up of new schemes. Councillor Chris Thayne, executive member for children’s services for Blackburn with Darwen, said: “There are many new and exciting developments in education including increasing use of technology and investment through Building Schools for the Future. Working together will help schools and post-16 education providers to more effectively manage the changes ahead and achieve the best possible outcomes”.

News in brief, cont'd...

A new short film about the ICT Managed Service in BSF is now available on the PFS website, www.partnershipsforschools.org.uk/library/the_role_of_ict.jsp.

The area-wide ICT Managed Service has been the default model for delivering ICT within BSF since the programme's inception. The reasons for this are three-fold. First: providing procurement, technical support and management of ICT services across a local authority area. Second: better and more consistent integration of ICT services to schools with construction. And third: greater coherence across a local area to support learning so that students have a more flexible and personalised learning experience. Underpinning this is the key assumption that schools should be released from the need to focus valuable resources into procuring and managing ICT, and that in essence, this should be available to them as a "5th utility" service.

The new film features students, teachers, technicians and heads from Lewisham, Leeds and Sheffield talking about how ICT is helping to transform teaching and learning, as well as sharing their experience of the new Managed Service.

Meanwhile the DCSF has published the second annual report on the evaluation of BSF by PwC. It concludes that the programme has "gathered momentum" in the last year and there has been "significant progress" to improve the efficiency. A full copy of the PwC Report can be found at: www.teachernet.gov.uk/management/resources/financeandbuilding/bsf

Hull's BSF team set Year 6 pupils a photography challenge to help increase their understanding of BSF and what it means for Hull. The children were given a BSF-branded furry bug and asked to take pictures of it in unusual and interesting places around the city.

David Martin, BSF Project Director, said: "Hull's BSF team is already working closely with young people from around the city, but we wanted to make sure we involve younger children in understanding how we can help to build their future.

"Have you got the BSF Bug? Is a fun way of engaging Year 6 pupils in BSF, and is a great opportunity to place the challenge of promoting the BSF project into the hands of primary-aged children."

The competition winner will receive an iPod and a sports kit for one of their school teams.

Diary dates

Partnerships for Schools & Education Guardian Conferences: ICT & Workforce Transformation

17 & 18 March 2009
Royal College of Surgeons, London

Two one-day conferences from Partnerships for Schools and *Education Guardian*, focusing on ICT and workforce transformation, will bring together experts in ICT, education and change management to help BSF stakeholders to improve learning and achievement for children and young people.

ICT in BSF
17 March 2009

Speakers at the third annual PFS ICT conference include:

- Tim Byles, chief executive, PFS
- Angela Armytage, Headteacher, Yewlands Technology College
- Richard Boughey, Transformation Director, Leeds City Council
- Steven Bradbury, BSF Director, Salford City Council
- Dr Christine Braddock CBE, Principal/Chief Executive, Sutton Coldfield and Matthew Boulton Colleges
- Stephen Crowne, Chief Executive, Becta
- Marc Davies, Counties Furniture Group
- Mike Foster, BSF Transformation, Sunderland City Council
- Jackie Green, Programme Director, Leeds
- Roger Henriksen, Head of Strategic Development, Essex County Council
- Phil Hilson, ICT Lead Officer, Chelmsford New Model Special School
- David Hyland, Managing Director, Education, Northgate
- Sheyne Lucock, BSF ICT Director, London Borough of Barking & Dagenham
- Professor Angela McFarlane, University of Bristol and RGB, Kew
- Kevin Palmer, BSF Transformation, Salford City Council
- Malcolm Reeve, Chief Executive, Chelmsford New Model Special School
- Grahame Ward, Director for Resources, Kent County Council

as well as key representatives from PFS and Becta, including Steve Moss, Beech Williamson and Nina Woodcock.



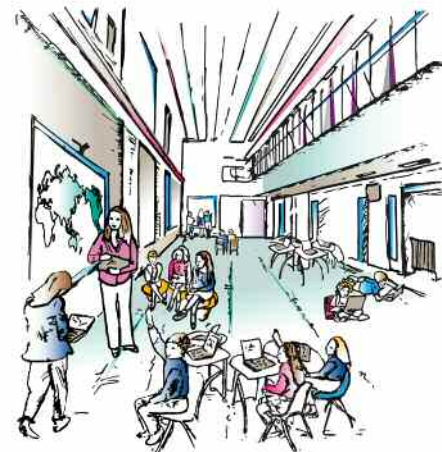
Workforce Transformation
18 March 2009

In order to fully realise the transformational potential of BSF, change management strategies need to be embedded from the outset. This first-ever workforce transformation event from PFS will be essential for anyone working to manage the changes that BSF demands.

Speakers from PFS and NCSL, including Tim Byles and Hannah Jones, will be joined by:

- Steve Bolingbroke, Managing Director, Kunskapaskolan
- Mike Chapman, Headteacher, High Storrs School
- Bernard Clarke, Secondary Transformation Team, Kent County Council
- Mark Compton-James, Head of Information Strategy, Haringey Council
- Andrew Harrison, Director, Learning and Research, DEG W
- Ros Vahey, Deputy Chief Executive, Education, Leeds City Council
- Professor John West-Burnham, St Mary's University College

For more details, up-to-date programmes for both events, or to register, visit the website at www.guardian.co.uk/bsfevents





Case study: Lancashire

Simi Gandhi (front row right) with mentees and contractors on site at the Pendle Vale Campus, where Catalyst Lend Lease hosted a visit for pupils interested in a career in construction

We invited Lancashire's BSF team to tell us about how a mentoring scheme is adding to BSF's skills legacy in the area.

School students in Burnley and Pendle are getting an extra dimension to their learning from volunteer mentors working on the £250 million Lancashire BSF project.

A local mentoring scheme was launched in 2007 by Catalyst Lend Lease, Lancashire County Council's private sector partner in the East Lancashire LEP, as an integral part of its successful skills legacy programme. In the first year, over 70 students at 12 schools each spent around two hours a month with mentors from two of the key companies in the Lancashire BSF supply chain.

The 35 trained mentors, from Catalyst Lend Lease and main contractor Bovis Lend Lease offered practical advice and support to a mix of students aged between 12 and 16. One particular aim was to talk to the students about their studies and help them to consider their future aspirations.

"After a successful launch of the scheme, we're now into our second academic year and putting into place some valuable lessons learned last year," says Simi Gandhi, who manages the LEP's skills legacy programme in Burnley and Pendle.

"Our aim this year is to build on those successes and make the mentoring sessions more formal. Participating schools are supplying profiles of the students taking part and we encourage our mentors to sign a contract with the mentee or their school, to help instil a greater sense of belonging and commitment to the programme."

"We have already found jobs for over 30 local school leavers with companies working on the BSF supply chain."



Blessed Trinity headteacher Bernadette Bleasdale (left) with two mentees and three mentors (left to right), Simon Whitaker of Catalyst Lend Lease, Paul Bennion and Catherine Edmundson, both of Bovis Lend Lease

The 2008 programme focuses more on one-to-one mentoring across a wider spread of students. It includes sixth form, Year 11 and students with special educational needs, and, for the first time, primary school pupils, in the form of lesson support and extra-curricular activities.

Increasing local interest in the scheme has attracted four more schools, making 16 in total for the new academic year. Two more of the LEP's supply chain partners, facilities manager Vita Lend Lease and ICT provider Redstone Communications, are also providing mentors this year.

Explaining the background to the scheme, Simi said: "Our skills legacy programme is going really well and we have already found jobs for over 30 local school leavers with companies working on the BSF supply chain. All those jobs include formal structured training programmes, so we thought it would be a logical extension to go into local schools to help students consider not just their current studies but their future careers as well. Hopefully we have been able to raise their aspirations and will continue to do so."

"We have been really pleased with the numbers of employees volunteering to work with our young people in Burnley and Pendle," said Angela Rawson Principal Adviser for BSF with Lancashire County Council. "Our vision of a skills legacy has been developed and promoted very well by Catalyst Lend Lease. It has a great potential to enhance the achievements and life-chances of our students and support wider regeneration in East Lancashire."

Update: Delivery Partners

Each edition of *Insite* features updates and news from our BSF delivery partners, CABE, 4ps and NCSL. For this edition, NCSL and CABE have contributed the following updates:

NCSL

The National College for School Leadership has launched *Future*, a website for everyone involved in school remodelling through the Building Schools for the Future (BSF) or Primary Capital Programme (PCP).

It provides unrivalled resources and news and can be used by the whole school community - with its emphasis on sharing good practice and encouraging feedback from school leaders, students, parents, architects and other stakeholders.

Hannah Jones, NCSL's special projects director for BSF and PCP, said: "Whether it is a shiny new-build or renewing schools, it can take a high degree of innovation and creativity to transform what exists already into spaces capable of delivering the kind of learning envisioned for school communities in the 21st century.

"School leaders, local authority leaders and all stakeholders facing these unprecedented challenges require support and inspiration that matches the task. That's why we have transformed our own internet presence into Future.

"*Future* is going to support awareness raising and the sharing of good practice. We also want to fill in any gaps that might emerge as projects progress. It's a two way street - we want our community to collaborate and tell us their needs, likes and dislikes."

Authoritative articles from leading experts in the field are complemented by video, podcasts, publications, presentations, reports, and case studies highlighting how schools are successfully engaging parents and pupils in the design process. Content addresses a wide range of issues from toilets to team teaching, from sustainability to SEN and settings. Access to the website is open and free to all.

NCSL's BSF programme supports school leaders and local authority teams to maximise the potential of the BSF programme to transform learning, providing timely advice so that school leaders can plan their input to the process at appropriate points to achieve maximum impact.

To access *Future* go to <http://future.ncsl.org.uk>

CABE

Sustainability

New-build BSF schools are currently required to deliver 60% reductions on 2002 sustainability data, and by 2016, all new builds will need to be 'zero carbon'

CABE's schools design panel began its work in July 2007: by December 2008 it had reviewed 154 designs for 53 BSF-funded schools in 25 local authorities. One of the 10 criteria that it uses to gauge design quality assesses whether the design is underpinned by a convincing environmental strategy. What CABE looks for is a coherent, integrated strategy for the design of the school, both inside and outside.

Much has already been learned from the panel's reviews. CABE has been drawing on that experience to identify what is essential for creating a sustainable school that provides a comfortable environment for students and teachers. That means fresh air and natural light, comfortable temperatures, good acoustics, easy-to-use controls, all at an affordable cost and with low maintenance.

There are some simple, straightforward messages. For example, Robin Nicholson, CABE commissioner, who also chairs DCSF's Zero Carbon Schools Task Force, has highlighted what any strategy needs to consider first and foremost:

orientation - the location and orientation of the school will have the biggest impact on sustainability

daylighting - a good daylighting strategy is critical to reducing energy use; the aim should be for most classrooms to be daylit for most of the day

ventilation - natural ventilation should be used as far as possible, but mixed mode may often be necessary

thermal comfort - high thermal mass is essential to a low-energy approach and is often the best way to achieve comfortable conditions all year round; some mechanical heating and cooling will be necessary for most of the year in most locations.

Sustainability should drive the design of a BSF school. So these inter-related issues need to be considered right from the start in an integrated way that involves clients, architects, engineers and the school's users. If they are successfully incorporated into the design, demand for energy will be significantly reduced. Only then should alternative energy sources be considered.

CABE's schools design panel at BSEC 2009

High-quality design is at the heart of transforming teaching and learning and CABE is working closely with PfS to support local authorities to get the best possible designs for their BSF schools.

CABE's schools design panel is central to that support. Since July 2007 the panel has been reviewing proposals from bidders for sample schools during the procurement phase of BSF, as well as non-sample schools and academies. It looks at the designs for each school and grades them against the 10 criteria that CABE believes are essential for a successful school.

CABE's schools design panel will be at BSEC 2009 in Manchester on 11 February 2009 to show how it assesses school designs. Normally, the panel's reviews are not public but at BSEC, CABE will demonstrate what it usually does behind closed doors.

On the panel, Ken Shuttleworth, CABE commissioner and panel's chair, will be joined by Jayne Bird of Nicholas Hare Architects, Richard Gooden, assistant head of architecture at Hampshire County Council, Fred Manson, associate director at Heatherwick Studios, and Richard Woods, associate at Capita Architecture.

The schools design panel is one part of CABE's work to ensure consistently high design for BSF schools. Equally important are CABE enablers - built environment professionals with schools experience - who provide expert practical advice and support from the earliest stages of the BSF process through to the selection of bidders. A CABE enabler is assigned to each local authority as each wave of BSF is launched. They advise on developing the vision for the local authority's BSF schools; design aspirations and preparing the brief; appointment of the project team; and achieving value for money through design.

CABE will be sharing this expertise at BSEC this year. At our stand, we shall be providing short informal introductions - with an opportunity to ask questions to the experts - on issues that will be of interest to all those involved in school building programmes. This will include how CABE supports local authorities through the procurement process, with examples of how that has worked in practice in two local authorities; the particular challenges of refurbishing primary and secondary schools; making the most of school grounds; and how schools can be designed to encourage regeneration of neighbourhoods and communities.

CABE's schools design panel at BSEC 2009: Wednesday 11 February 2009, 2.15pm-4pm.

For further information, see www.buildingschools.co.uk

www.cabe.org.uk



Case study: Hartlepool

Space to Learn: supporting transformation

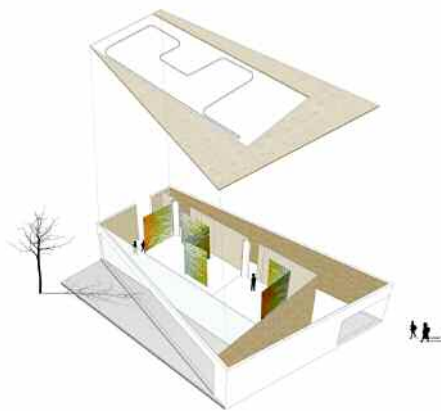
We invited Hartlepool's BSF team to tell us about the test learning space they are creating for schools in the BSF programme.

Hartlepool, a Wave 5 BSF local authority, understands that to achieve their ambitious plans for educational transformation, they need to transform the way schools work and how learning is delivered. That is why, with the support of GWK architects and Turner & Townsend, they are creating an innovative £1m learning environment known as '*Space to Learn*' which will enable all schools throughout the town to test out new ideas in teaching and learning ahead of their PCP and BSF investment. This will support teachers and students in developing their own ideas of how schools should be designed in the future if the built environment is truly going to support transformational outcomes.

Funded by the local authority and the Roman Catholic and Church of England Dioceses, *Space to Learn* will provide an opportunity for Hartlepool's schools to challenge how teaching and learning might take place in the future, and how the built environment could be configured to best support this.

Local authority staff, teachers and pupils have been involved in the design of the building from the very start. The exterior of the building will have a unique, iconic identity; a showcase for modern teaching and learning. Building materials, energy conservation and construction techniques designed to minimise impact on the environment will be used.

The interior will comprise of a suite of learning spaces, which can be flexibly reconfigured using a system of acoustic curtains that are lightweight and soundproof. Staff and pupils can experience working in an environment that will enable and support a range of different teaching and learning styles. The facility will be equipped with a full range of the latest technologies to demonstrate how technology could support teachers in personalising the learning experience for young people. The technology will also enable the environment to be flexed easily to support different learning situations.



The multi-million pound programme to transform schools across Hartlepool is set to get under way very soon. Work could start on re-building one of the first primary schools through the Primary Capital Programme as early as spring 2009, and the first BSF project, the remodelling of Dyke House School, is expected to get under way by August 2010.

"This is a great opportunity to create a whole new learning environment for children that will stimulate imaginations"

This capital investment in schools will allow the local authority and its partners to look again at the way in which education is delivered and build further upon Hartlepool's reputation for delivering the best outcomes for its learners and young people

Adrienne Simcock, the Council's Director of Children's Services, said: "I think it is important to try out innovative and experimental ideas and '*Space to Learn*' will enable us to do this.

"This is a great opportunity to create a whole new learning environment for children that will stimulate imaginations and encourage them to achieve their full potential."

If you would like your BSF project to feature in the next edition of *Insite*, please contact us at insite@p4s.org.uk



PfS Events 2008

Partnerships for Schools remains committed to sharing knowledge and best practice from across the BSF community – two high-profile events in November did just that, bringing together stakeholders from across the school building community:

Design Conference

Headteachers, architects, contractors and local government officials were among the 200-plus delegates to attend PfS's first annual design conference on 26 November 2008, held in partnership with Education Guardian. The programme was jam-packed with invaluable sessions for those interested in hearing more about design and sustainability.

The event began with an introduction by conference chair and independent consultant, Ruth Kennedy, followed by a keynote speech by Tim Byles. In his speech, Tim addressed a number of design issues, such as the importance of listening to students, teachers and parents in order to produce the right designs for each school, and the impact that design can have for learning. He also reiterated the commitment to a 'Minimum Design Standard' to ensure that no BSF school design falls below par.

He added: "This Minimum Design Standard will take into greater account than ever before the views of the end users teachers, students, and the views of educationalists as well as the design community. We intend to carry out consultation on the evolving proposals in February/March of next year. We are particularly looking at how we can extend the MDS to post-LEP projects so that we can ensure that quality remains high, and we can feed learning back from these projects back into the programme."

Tim also confirmed in his speech that "PfS will be supporting and complementing the Post-Occupancy Evaluations being carried out through the DQI process, to capture the views of the users about what it is like to work and study in their new learning environment, and to feed this back into the programme for later waves to learn from."

A keynote panel session focused on how to use design to achieve teaching and learning aspirations. This saw Mike Foster, Project Director for Transformation at Sunderland City Council; Mairi Johnson, Director of Design at PfS; Keith Papa, Architect Director at BDP; Richard Simmons, Chief Executive of CABE; and Jane Briginshaw, DCSF Head of Design, address such issues as the impact of good design and how school buildings can be used as an education tool. The panel also addressed the benefits of different spaces for teaching and learning.

Next up came a presentation by Co-chair of the Sorrell Foundation, Sir John Sorrell, who highlighted the importance of engaging children and young people in the design process. Using examples of how feedback from pupils during Sorrell Foundation sessions had inspired architects to formulate groundbreaking designs, he brought home the importance of student engagement in the building of schools.

The remainder of the conference was split into various workshops on the logistics of design issues. For example, industry experts such as Judit Kimpian, Head of Sustainability and Advanced Modelling at Aedas, and Martin Mayfield, Director of Arup, considered sustainability in practice, Russell Andrews, Director of Education and Planning at PfS, led a session on improving stakeholder engagement in design issues and Beech Williamson, Design Manager at PfS, spoke about what personalised learning means for design.

A full copy of Tim Byles's speech can be found on the PfS website: www.partnershipsforschools.org.uk/media/speeches/sp_2008-11-26-Design%20conference.jsp.



Excellence in BSF Awards



Partnerships for Schools' first design conference on November 26 2008, was followed that evening by another 'first' - the inaugural *Excellence in BSF Awards*. With 80 local authorities – and around 1,200 schools – now involved in BSF, the awards were established to celebrate excellence and showcase best practice amongst all those involved in BSF, in schools, the private sector, and local authorities.

While there were only 12 winners on the night, over 70 entries were received and the high standard of all of these submissions was commented on by Tim Byles, Chief Executive of PfS and Chair of the *Excellence in BSF Awards* judging panel. He said: "It sounds like a cliché to bemoan what a difficult job the judging panel had selecting the winners, but in the case of our first *Excellence in BSF Awards*, this was absolutely true.

"If choosing the shortlist from the 70-plus entries was hard enough, selecting the final winners was a real challenge for the panel as each and every entry had something to recommend it. The nominations showcased BSF as a catalyst for exciting and sustainable design in both new and remodelled schools, innovation in how students get involved in transforming their learning environment, and examples of robust partnerships and new leadership teams emerging."

The awards ceremony was presided over by comedian Rob Brydon (pictured below) who added his own wry take on the serious business of rebuilding and renewing England's secondary schools estate.

The winners of the silver star awards are listed on the next pages.

"...the real winners are the students, teachers and communities who will benefit from safe, inspiring and green places to learn, thanks to BSF..."



Whilst each of the 11 winners of the first *Excellence in BSF Awards* were all recognised as shining examples of the difference BSF can make, for the judges one project shone more brightly than the rest and so deserved special recognition. Thus, The Michael Tippett School, a school for students with profound and multiple learning difficulties, was announced as the 'Grand Prix' winner, due to the positive impact this new learning environment is having on its students, just eight months after opening.

Ruth Downing, Chair of governors at The Michael Tippett School, said:

"It was a huge honour and pleasure to be part of the team that attended the BSF awards and to have a wonderful evening crowned by collecting not one but two awards on behalf of The Michael Tippett School. The glory for the best design award of course is rightly Marks Barfield's but it has always been clear that it is much more than the design and construction of our beautiful new school which makes it so special.

"The 'Grand Prix' for overall achievement was therefore a more than fitting recognition of the work by everyone involved in the planning and creation of The Michael Tippett School and the new life which has now started so successfully in this inspirational building. Jan (headteacher of The Michael Tippett School) and all her staff deservedly can be very proud of their individual contributions which undoubtedly secured these awards."

The 'Grand Prix' award was not the only surprise of the evening. Speaking as the ceremony came to an end, Tim Byles announced that PfS plans to launch a charitable trust which will support and enhance the delivery of BSF objectives through funding schemes which help young people and learners make the most of educational and training opportunities. He said:

"The BSF Foundation will fund a blend of national and local initiatives that will help every young person identify their talents and achieve their best. Set against the backdrop of a new school environment, projects funded will support non-core curricula activities that take place in and around school with a particular focus, but not limited to, the most disengaged and disaffected young people in the school system. Discussions are still ongoing to finalise the projects which will range from the arts and sport, through to financial literacy and careers focused schemes."

More information on the foundation, which will be chaired by Sir David Bell, Chairman of the FT and Chairman of Crisis, Common Purpose and Sadlers Wells, will be available in Spring 2009.



Excellence in BSF Awards: the Winners

Pictured above, the Grand Prix-winning team from The Michael Tippett School design project, with Tim Byles, far left and comedian Rob Brydon, far right.

The winning projects for the *Excellence in BSF Awards 2008* are listed below, along with comments and quotes from some of the winners:

Innovation in Student Engagement:

Knowsley Metropolitan Borough Council
(local authority winner)

Mossley Hollins High School,
Tameside Metropolitan Borough Council
(school winner)

"We are all delighted with this award. It is fantastic that the hard work of all involved in the Tameside BSF programme, especially the young people who have contributed so much to the process has been recognised. Our next task is discuss with them how best to celebrate! "

Elaine Todd, Tameside BSF Project Director



Best Transformational Learning Strategy:

Knowsley Metropolitan Borough Council

Highly commended: Sunderland City Council

Best Design for a New School:

The Michael Tippett School, Lambeth

Highly commended: Brislington Enterprise College, Bristol

Most Sustainable School Design:

Bideford College, Devon

"I am over the moon – this is the icing on the cake after much hard work by the design team and comes at a very exciting time as we officially open our new office at Capital Court. This project has given NPS the vital experience and confidence in taking forward the Government's agenda of achieving carbon neutrality for new school buildings by 2016."

Steve Daw, Managing Director of NPS South West

Highly commended: Highbury Grove School and Samuel Rhodes School, Islington



Best Design for a Remodelled School

Kelmscott School, Waltham Forest (pictured above)

"We are extremely happy that Kelmscott School won this award and view it as a testimony to the talent and hard work of all those involved in its refurbishment.

"Pupils, parents and teachers all agree that the results are stunning, and this success marks an excellent start to our £300 million investment in improving Waltham Forest's schools."

Cllr Chris Robbins, Waltham Forest Council's Cabinet Member for Children and Young People.

Best BSF Academy delivered in Partnership:

The South Maidstone Federation Academies: New Line Learning Academy and The Cornwallis Academy

"We are absolutely delighted to have won this award and to be recognised nationally for our outstanding partnership working.

"This award is a real testament to our staff who have worked incredibly hard with parents, students and governors to provide the best educational opportunities and facilities possible, securing a brighter future for our pupils."

Gigi Luscombe, Deputy Executive Principal of South Maidstone Academies Federation



Innovation in ICT:

Leeds

Best Operational LEP:

Leeds

"It is a fantastic achievement to receive these two awards which are a reflection of the brilliant work being carried out to improve schools through the BSF programme.

"The Leeds BSF partnership is a fantastic success because everyone involved shares our vision to create brilliant learning places where every young person can be happy, healthy, safe and successful."

Chris Edwards, Chief Executive of Education Leeds

Best Community Integration:

South Tyneside and Gateshead

"Adult and Community learning is as integral to our work as is teaching and learning for the young people in our care. Through BSF we have the opportunity to transform learning for all our community groups."

Claire Mullane, Headteacher of Mortimer Community College



Best School Team:

Brislington Enterprise College, Bristol (pictured above)

"We are delighted to have won the best school team award and to have been highly commended for our design.

"Teaching staff, governors and students have been at the heart of our four-year journey of transformation that has seen us move into a new building while at the same time applying a radically new model, human scale education. It was crucial for the success of the project that existing teachers, and the 65 others who have joined us, shared the vision of the leadership team and governors."

John Matthews, Principal of Brislington Enterprise College

Grand Prix:

The Michael Tippett School, Lambeth (pictured above, centre)

"The "Grand Prix" for overall achievement was a more than fitting recognition of the work by everyone involved in the planning and creation of The Michael Tippett School and the new life which has now started so successfully in this inspirational building.

Jan, the headteacher, and all her staff deservedly can be very proud of their individual contributions which undoubtedly secured these awards."

Ruth Downing, Chair of governors at The Michael Tippett School.



Case study:

Student engagement and design consultation in Camden

Students from the 10 Camden schools which will be transformed as part of the borough's BSF programme took to the stage of the Roundhouse in November to share their vision for the schools of the future.

Over the course of five months, students from secondary schools, special schools and pupil referral units took part in The Sorrell Foundation's Joinedupdesign for Schools programme to gain an insight into what constitutes good design. Activities ranged from workshops at the Young Design Centre in Somerset House, to visiting inspirational public buildings, as well as numerous opportunities to speak directly with architects to understand how space, colour and other design choices influence behaviour, attitudes and a sense of well-being.

The pictures above, below and on the front cover (main image) show Camden students presenting their design visions at the Roundhouse event and taking part in group consultations.

Students not only got a chance to talk about design with the professionals, they were encouraged to act as BSF ambassadors in their schools, informing their peers about BSF and soliciting ideas from them which could be passed on to architects, builders and designers. They then produced a 'pupil brief' setting out the key issues and challenges that students identified in their school, and how they would like to see things changed.

The students were then invited to present their ideas to an audience of headteachers, governors, councillors, parents, architects and school design advisers at the famous theatre.

Charlie Tilley, a Year 8 student at Acland Burghley School was one of the young people taking part. He said: "We've given our ideas and I want to see what the architects come up with. I'd like to see what they do with the space at our school and it'll be very rewarding to see our ideas become a reality."

"I want to see what the architects come up with... it'll be very rewarding to see our ideas become a reality"

Ani Bhagtiani, Year 11, at Maria Fidelis RC School for Girls, enjoyed the opportunity to put her ideas across. She said: "It's been a really good experience. Meeting with the architects made me realise how you can take the challenges at the school and make your own solutions. We've contributed lots of innovative ideas for the new school."

If you would like your BSF project to feature in the next edition of *Insite*, please contact us at insite@p4s.org.uk



Case study, cont'd...

Andrew Mennear, Camden's Executive Member for Schools said: "Our programme of student engagement is a hugely important part of the BSF process in Camden, and is providing opportunities over and above ensuring that we design and build schools which we can be proud of. "

"We have been overwhelmed by the fresh energy and ideas generated by the students, which goes to show just why their involvement is crucial. Not only are we involving the very people that BSF is designed to benefit, but through a programme of consultation and discussion with their peers, awareness of BSF and interest in the programme is spread throughout the school population."

"We have been overwhelmed by the fresh energy and ideas generated by the students"

Janet Grauberg, Camden's Executive Member for Children and Young People said: "The programme has given us fantastic material that will really help us in transforming the way our children and young people learn, as well as our buildings. Camden's pupil briefs now form part of our Outline Business Case and we aim to involve the students in our procurement processes, such as interviewing bidders and evaluating the bids.

"It was great to see so many young people working together on what they wanted for their fellow pupils, and particularly rewarding to see students from the pupil referral units giving articulate presentations at the Roundhouse and taking an obvious pride in what they'd achieved."

More about The Sorrell Foundation's work, the Young Design Centre at Somerset House, Joinedupdesign for BSF and Joinedupdesign for Schools can be found at www.thesorrellfoundation.com



Future events

BSEC 2009
11-12 February 2009
Manchester Central

BSEC covers the government's school building programmes in addition to PFI projects, focusing on the construction, maintenance, ICT, design and infrastructure of all schools.

PfS will again be supporting the event, and will be exhibiting at the show in addition to providing speakers to the main seminar programme and workshop streams.

www.buildingschools.co.uk

Education Show 2009
26-28 March 2009
NEC, Birmingham

The Education Show 2009 is the UK's largest showcase of educational resources of all kinds. Partnerships for Schools will once again be contributing to the seminar programme at The Education Show in 2009.

www.education-show.com

Jonathan Ibikunle, 1955-2008

We are sad to report the tragic death of Jonathan Ibikunle, who worked for Partnerships for Schools from 2006-2008.

Jonathan was knocked down by a car in Dubai, where he was working as Director of Schools Development for GEMS Education. He died from his injuries on 12 December 2008.

He left PfS as the Head of Design, having contributed to the success of some very challenging local authorities in Waves 1 and 2, and some of the most innovative projects.

His relaxed and friendly yet persuasive style ensured that many designs were

improved, but also made him many friends in PfS, the DCSF and the partners and local authorities he worked with. He will be greatly missed.

Jonathan leaves a wife and two daughters, who live in the house he built for them.

As a tribute, a month-long safety campaign in GEMS schools in January was launched by the Schools Transport Services in Dubai, following the rising road deaths in the emirate.

Pictured below, Jonathan with his PfS design team colleagues at his leaving drinks in June 2008. Left to right, Paul Middleton, Jonathan, Beech Williamson.



The *Insite* Interview

Jan Stogdon,
Headteacher

The Michael Tippett
School, Lambeth

The 'Grand Prix'-winning school in
the *Excellence in BSF Awards 2008*

What difference do you think a new learning environment can make to young people with learning difficulties?

Ultimately it is all about providing our children with opportunities that simply were not possible in our previous building.

The children who attend The Michael Tippett School have such a wide range of needs and it is great to have a physical environment that has been designed specifically with those needs at the forefront.

“...when a parent comes says to you that your school has benefited their child in ways that they didn't think possible – that can be very special.”

The image right shows Jan with Secretary of State Ed Balls at the April 2008 official opening of The Michael Tippett School



What do you see as the main challenges in BSF?

The overwhelming impression is one of speed. The number of decisions you have to make in a very short space of time is quite considerable, and it is always a challenge to make sure you are on top of the detail.

The number and range of stakeholders and organisations involved and the need to ensure you are communicating well with them all is also challenging.

Rebuilding a school – let alone your own school – requires a skill set so far removed from our profession that it truly is uncharted territory; there are not many school staff who are used to engaging with, and holding their own with, the sheer range of stakeholders and their respective jargons!

What one piece of advice would you pass on to others who are just starting out on the BSF journey?

Be very clear about the purpose and what you, your staff and your children need. Ultimately, stick to what you believe is right for your school.

What are you most proud of in your career so far?

Parents can be very challenging in any school environment, and so when a parent comes says to you that your school has benefited their child in ways that they didn't think possible – that can be very special.

Now for the fun question: which three people - dead, alive or fictional - would you choose to have dinner with?

Impossible question! After a bit of thought... It would have to be Arsene Wenger, Tony Benn and Billie Holiday, in no particular order.

